

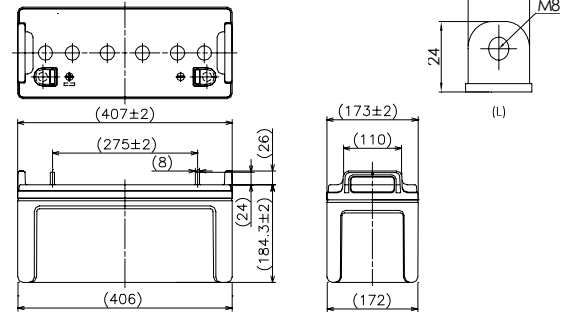
Panasonic

LC-P12100

For standby power supplies
 Expected trickle life: 6 years at 25°C
 10 years at 20°C



■ Dimensions(mm)



※The printed trademark and color of the battery's picture maybe different from the object, please make the object as standard.

Battery case resin: Flame-retardant (UL94V-0)

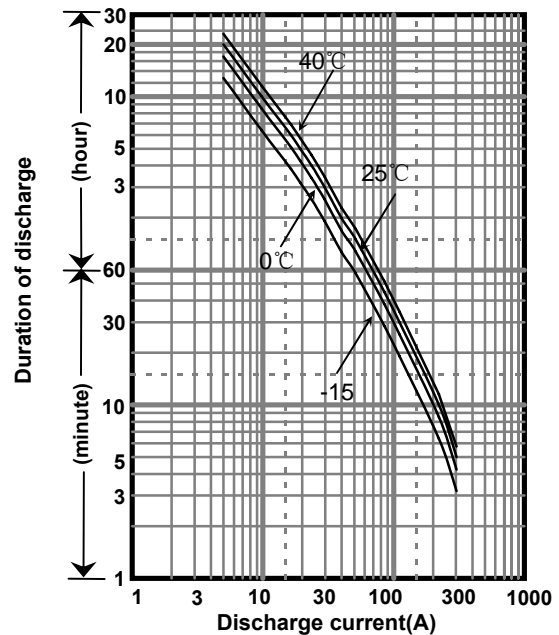
■ Specification

Nominal Voltage		12V
Rated Capacity(20HR)		100Ah
Dimensions	Length	407 mm
	Width	173 mm
	Height	184 mm
	Total height	210 mm
Approx. Mass		28.0kg
Terminal		M8 L Type

■ Characteristics

Capacity (25 °C)	20 hour rate	100Ah
	10 hour rate	90Ah
	3 hour rate	76Ah
	1 hour rate	56Ah
Internal Resistance (25 °C)	Fully charged battery	5.5 mΩ
Temperature Dependency of Capacity (20 hour rate)	40 °C	102%
	25 °C	100%
	0 °C	85%
	-15 °C	65%
Self Discharge (25 °C)	After 3 months	91%
	After 6 months	82%
	After 12 months	64%

■ Duration of discharge vs. discharge current



■ Watt Table(25°C)

Wattge values in the table are average instead of guaranteed value, please consider appropriate redundancy by application.

(Wattage/Battery)

Cut-off V	5min	10min	15min	20min	30min	45min	1h	1.5h	2h	3h	4h	5h	6h	10h	20h
9.6V	2610	2094	1769	1500	1164	843	715	528	440	305	237	192	162	92.3	47.0
9.9V	2564	2069	1751	1493	1151	822	696	514	428	299	232	186	157	89.2	46.7
10.2V	2403	2016	1715	1468	1138	815	677	503	422	294	227	181	153	88.1	46.1
10.5V	2153	1868	1596	1394	1113	802	658	493	414	289	224	178	150	87.1	45.8
10.8V	1903	1633	1460	1330	1053	773	649	470	404	284	219	175	148	86.0	45.5

■ Ampere Table(25°C)

Ampere values in the table are average instead of guaranteed value, please consider appropriate redundancy by application.

(Ampere/Battery)

Cut-off V	5min	10min	15min	20min	30min	45min	1h	1.5h	2h	3h	4h	5h	6h	10h	20h
9.6V	303	202	154	129	100	74.1	62.4	46.9	40.6	29.1	22.8	19.3	16.2	9.41	5.13
9.9V	300	199	152	128	98.2	72.3	61.5	45.7	40.5	28.5	22.6	18.8	16.0	9.31	5.03
10.2V	292	194	149	127	95.1	71.6	60.3	44.8	39.4	28.3	22.5	18.7	15.7	9.21	5.01
10.5V	270	180	139	120	93.0	70.5	59.1	43.8	38.1	27.8	22.3	18.5	15.5	9.10	5.00
10.8V	236	157	127	115	88.0	68.0	56.7	41.8	35.5	26.7	21.6	17.7	15.3	9.00	4.92

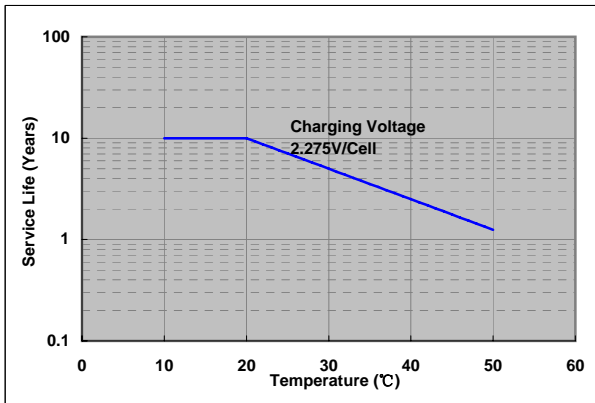
Charging Method (25°C)

Trickle use	Control voltage:13.6-13.8V Initial current:15.0A or smaller
-------------	--

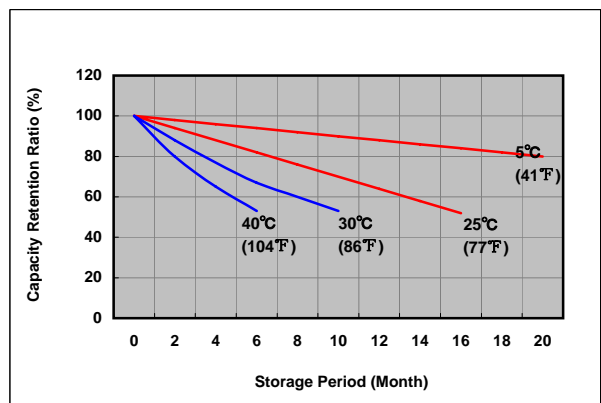
Cut off voltage

Discharge current	5.00A-20.0A	20.0A-50.0A	50.0A-100A	100A-200A	200A-300A
Cut off voltage(V)	10.5	10.2	9.9	9.3	8.7

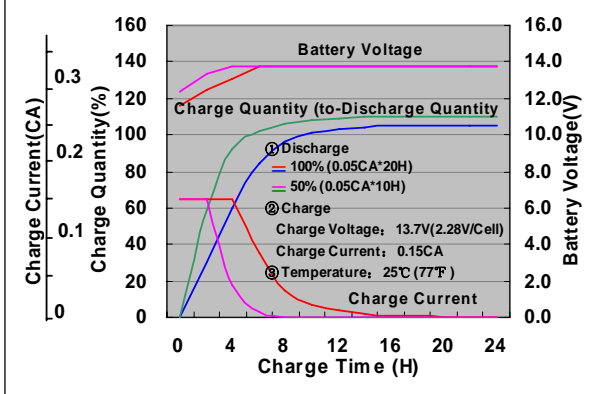
Influence of Temperature on Trickle life



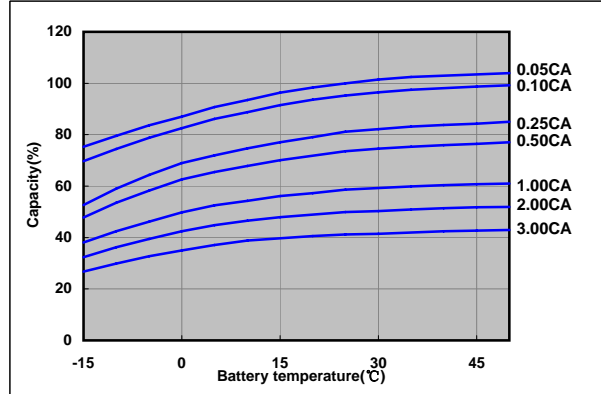
Residual capacity test result



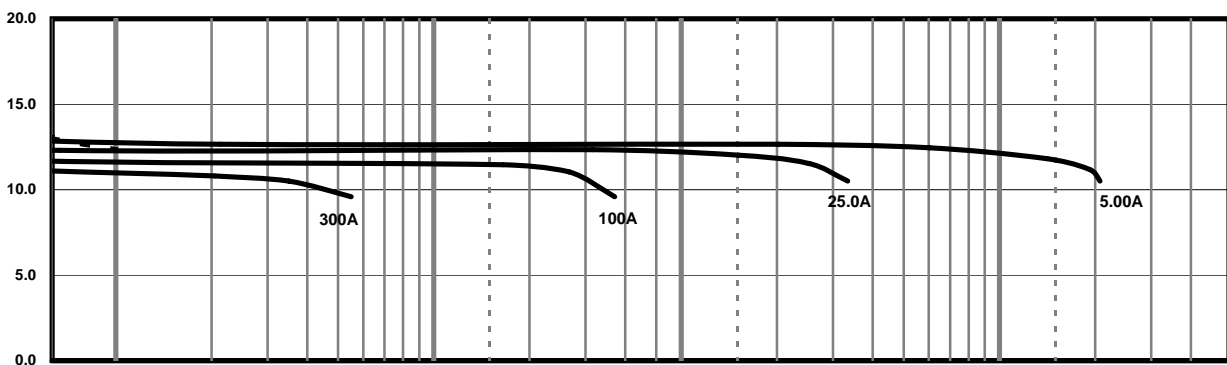
Constant-voltage constant-current charge characteristics for Trickle use



Discharge capacity by temperature and by discharge current



Discharge characteristics(25°C)



Caution

Due to the potential energy stored in the batteries, Please read 《Precautions for handling the Rechargeable Valve Regulated Lead Acid Batteries》 before using batteries. If improper handling or use of the batteries without understanding 《Precautions for handling the Rechargeable Valve Regulated Lead Acid Batteries》 may result in bodily injury caused by electrolyte leakage, heat generation, or explosion.

Panasonic Storage Battery (Shenyang) Co., Ltd

NO. 17 Hunhe 20Th Street, Shenyang Economic & Technical Development Zone,110142 China
Tel: 86 24 25818921
Fax: 86 24 62786318
Website: <http://www.panasonicbattery.cn>

2017.04